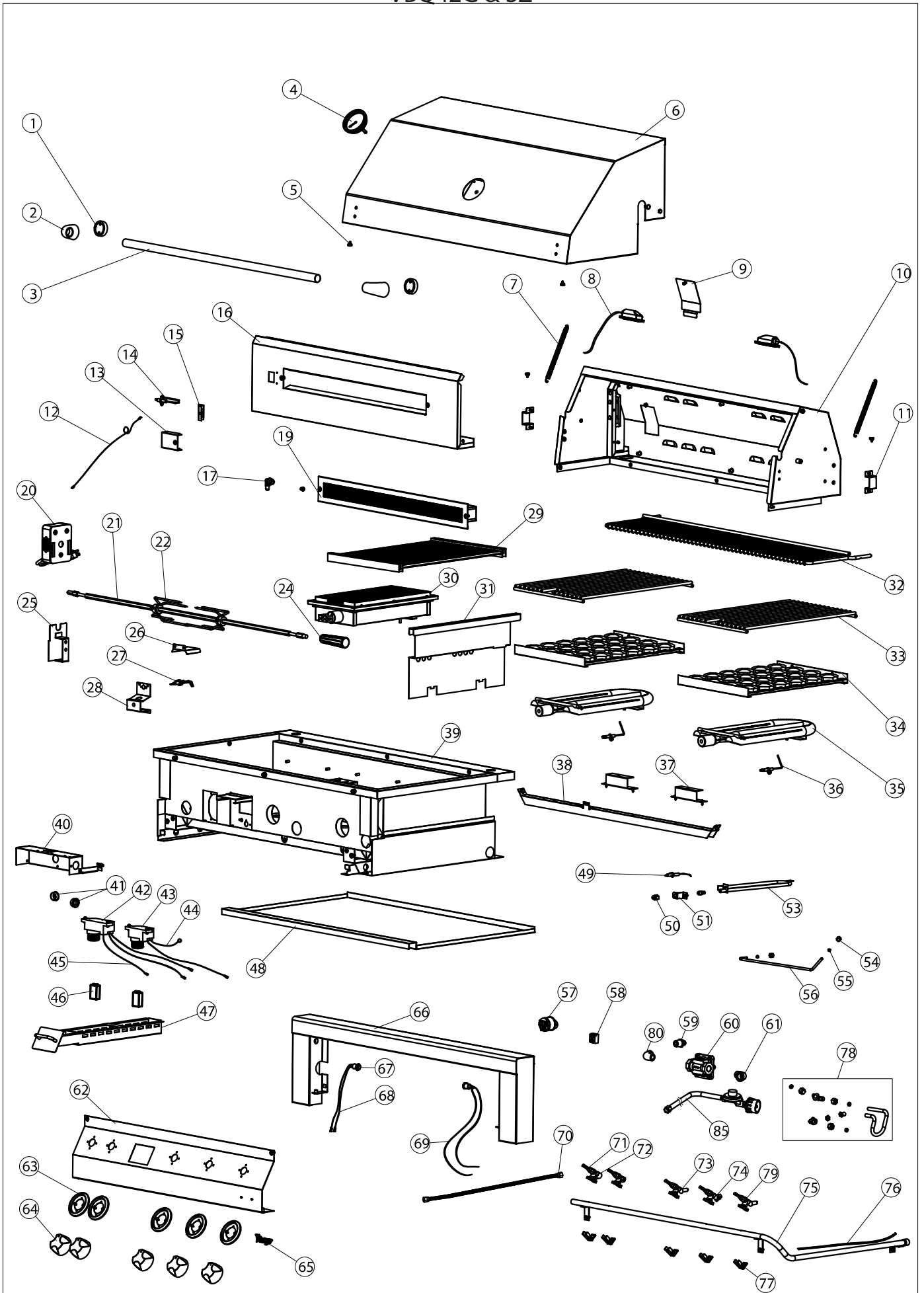


VBO42G & SZ



VBQ42G & SZ

Item	Description	Part #	Qty.
1	BLACK SPACER FOR HANDLE	VP-40569	2
2	HOOD HANDLE END CAP (NOT AVAILABLE SEPARATE FROM HANDLE)	N/A	2
3	HOOD HANDLE FOR 42" (INCLUDES END CAPS)	VP-40567	1
4	TEMPERATURE GAUGE	VP-40572-1	1
5	RUBBER HOOD STOPPER	VP-40597	4
6	HOOD ASSEMBLY FOR 42" (HANDLE / TEMP GAUGE NOT INCLUDED)	VP-40563	1
7	SET OF SPRINGS (PRODUCED BEFORE AUG. 2014)	VP-40584-3	1
	SET OF SPRINGS (PRODUCED AFTER AUG. 2014)	VP-40584-5	1
8	INTERIOR LIGHT ASSEMBLY (PRODUCED AFTER 2008)	VP-40577	2
9	BACK BURNER ORIFICE ACCESS PANEL	VP-40800	1
10	BACK HOOD FOR 42"	VP-40801-3	1
11	HOOD LIMIT PLATE	VP-40802	2
12	ROTIS INFRARED BURNER IGNITER WIRE FOR 42" (NOT AVAILABLE SEPARATE FROM IGNITER)	N/A	1
13	BACK BURNER IGNITOR COVER	VP-40803	1
14	ROTIS INFRARED BURNER IGNITER W/WIRE FOR 42" (1750mm wire)	VP-40520-3	1
15	IGNITER BRACKET FOR REAR BURNER	VP-40804	1
16	BACK BURNER PANEL FOR 42"	VP-40805-3	1
17	ROTIS INFRARED ORIFICE FITTING	VP-40806	1
19	ROTIS INFRARED BURNER (INCLUDES PANEL & IGNITER)	VP-40515	1
20	ROTIS MOTOR	VP-40534	1
21	ROTIS ROD FOR 42"	VP-40539	1
22	ROTIS FORKS (SET OF 2) W/THUMB SCREWS FOR 42"/56"	VP-40535-2	1
24	ROTIS ROD HANDLE FOR 42"/56"	VP-40536-2	1
25	ROTIS MOTOR MOUNTING BRACKET	VP-40807	1
26	SMOKER / SEAR IGNITER COVER	VP-40808	1
27	SEAR ZONE IGNITER	VP-40522	1
28	SEAR ZONE BURNER ORIFICE BRACKET FOR 30"/36"/42"	VP-40809	1
29	V ROD GRATE FOR 30"/42"/56"	VP-40551	0(G), 1(SZ)
30	SEAR ZONE BURNER	VP-40518	0(G), 1(SZ)
31	HEAT SEPARATOR FOR 30"/36"/42"	VP-40810	0(G), 1(SZ)
32	SS WARMING RACK FOR 42"	VP-40555	1
33	GRATE FOR VBQ 42"/56"	VP-40547	3(G), 2(SZ)
34	BRIQUETTE TRAY FOR 30"/42"/56"	VP-40542	3(G), 2(SZ)
35	MAIN U BURNER	VP-40511	3(G), 2(SZ)
36	MAIN U BURNER IGNITER	VP-40519	3(G), 2(SZ)
37	BURNER BRACKET CUSHION BOARD	VP-40606	3(G), 2(SZ)
38	BURNER BRACKET FOR 42"	VP-40606-1	1
39	BASIN FOR 42"	N/A	1
40	SPARK MODULE BRACKET	VP-40529-5	1
41	WIRE PROTECTION COLLAR	VP-40811-3	2
42	4PT SPARK MODULE (Must also replace 2pt module & spark module bracket if made before 2019)	VP-40529-2	1
43	2PT SPARK MODULE (Must also replace 4pt module & spark module bracket if made before 2019)	VP-40528-2	1
44	GROUNDING WIRE FOR 42"/56"	VP-40825	1
45	IGNITER WIRING KIT - 42" (4 wires = 1 of 800mm, 1 of 460mm, 3 of 320mm) NO ROTIS WIRE	VP-40532	1
46	BATTERY (9 VOLT FOR OLD MODULE, AA FOR NEW MODULE) OBTAIN LOCALLY	N/A	2
47	SMOKER TRAY FOR 30"/42"/56"	VP-SMDR	1
48	DRIP TRAY FOR 42"	VP-40587	1
49	SMOKER BURNER IGNITER FOR 30"/42"/56"	VP-40521	1
50	SMOKER BURNER ORIFICE FITTING FOR 30"/42"/56"	VP-40826	1
51	SMOKER BURNER ORIFICE BRACKET FOR 30"/42"/56"	VP-40827	1
53	SMOKER BURNER FOR 30"/42"/56"	VP-40516	1
54	TUBE NUT FOR 30"/42"/56"	VP-40828	1
55	TUBE SEAL FOR 30"/42"/56"	VP-40829	1
56	SMOKER GAS LINE FOR 42"/56"	VP-40599	1
57	POWER SOCKET	VP-40583	1

58	TERMINAL BLOCK	VP-40812	1
59	INCOMING FITTING	VP-40813	1
60	REGULATOR	VP-40600	1
61	1/2 FITTING	VP-40814	1
62	CONTROL PANEL (NO SEAR ZONE) FOR 42G	VP-40559	1
	CONTROL PANEL (WITH SEAR ZONE) FOR 42SZ	VP-40591	1
63	KNOB BEZEL	VP-40575	5
64	KNOB	VP-40574	5
65	LOGO PLATE	VP-40573	1
66	BULL NOSE FOR 42"	VP-40595	1
67	IGNITER SWITCH	VP-40581	1
68	IGNITER SWITCH WIRE	VP-40816	2
69	INTERIOR LIGHT SWITCH	VP-40580	1
70	STAINLESS FLEX LINE FOR 30"/42"/56"	VP-40817-1	1
71	ROTIS INFRARED BURNER VALVE FOR 30"/36"/42"	VP-40524	1
72	RIGHT ANGLE FITTING	VP-40818	1
73	MAIN U BURNER VALVE FOR 30"/36"/42"	VP-40523	3(G), 2(SZ)
74	SMOKER BURNER VALVE FOR 30"/42"	VP-40525	1
75	MANIFOLD FOR 42"	VP-40700-4	1
76	LIGHT WIRE HARNESS FOR 42"	VP-40607-3	1
77	LATCH FOR VALVE (NOT AVAILABLE SEPARATE FROM VALVE)	N/A	5
78	SMALL HARDWARE KIT FOR 42"/56" (BRASS NUTS, SEALS, VALVE & ORIFICE FITTING, GAS TUBE)	VP-40819-1	1
79	SEAR ZONE INFRARED BURNER VALVE - LIQUID PROPANE	VP-40526-2	0(G), 1(SZ)
	SEAR ZONE INFRARED BURNER VALVE - NATURAL GAS	VP-40526-1	0(G), 1(SZ)
80	ELBOW FOR REGULATOR	VP-40815	1
	LP TANK REGULATOR W/HOSE	VPGRRREGHOSE	1
	LP CONVERSION KIT (COMPLETE)	VPGRLP	1
	NG CONVERSION KIT (COMPLETE)	VPGRNG	1